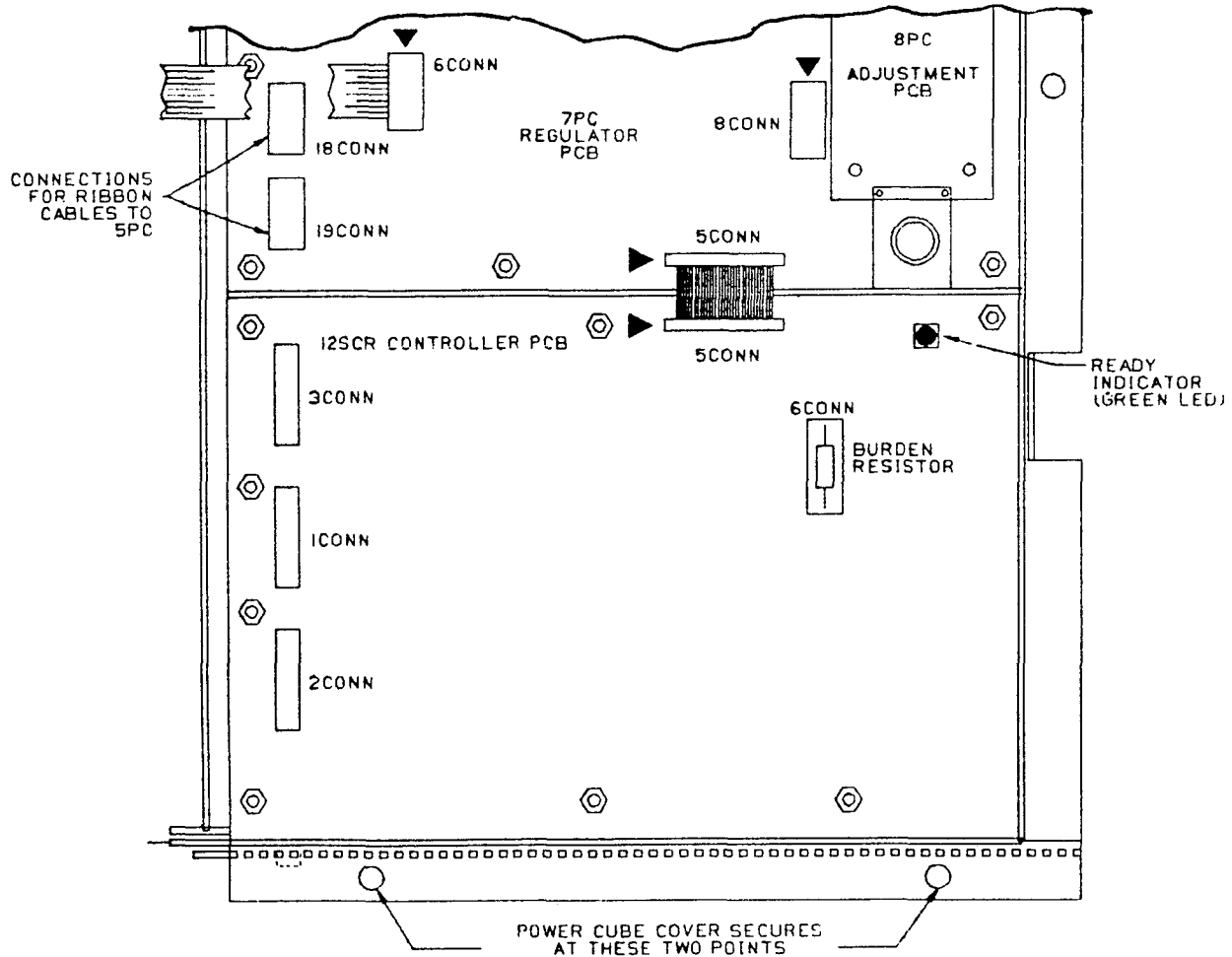


For Saber 3412 DC Drives
25HP 240 VAC
50HP 500 VAC

BURDEN RESISTOR SELECTION FOR OVERLOAD PROTECTION KIT 46S02735-0030

The standard Controller is shipped without a burden resistor in place on 6CONN of the 12SCR Controller PCB. See Figure 1 for location of 6CONN. The burden resistor calibrates the current feedback signal. For this reason, the motor characteristics (full load rated amps, HP, and voltage) must be matched

to the proper burden resistor value. Refer to Table 1 for selection of the burden resistor. The burden resistor kit contains a number of 6CONNS, each of which contains a different valued resistor. Select the 6CONN marked with the part number identified in Table 1 and insert into 6CONN.



Ref. TD 13S FIG1.2

Figure 1.

CHANGE RECORD

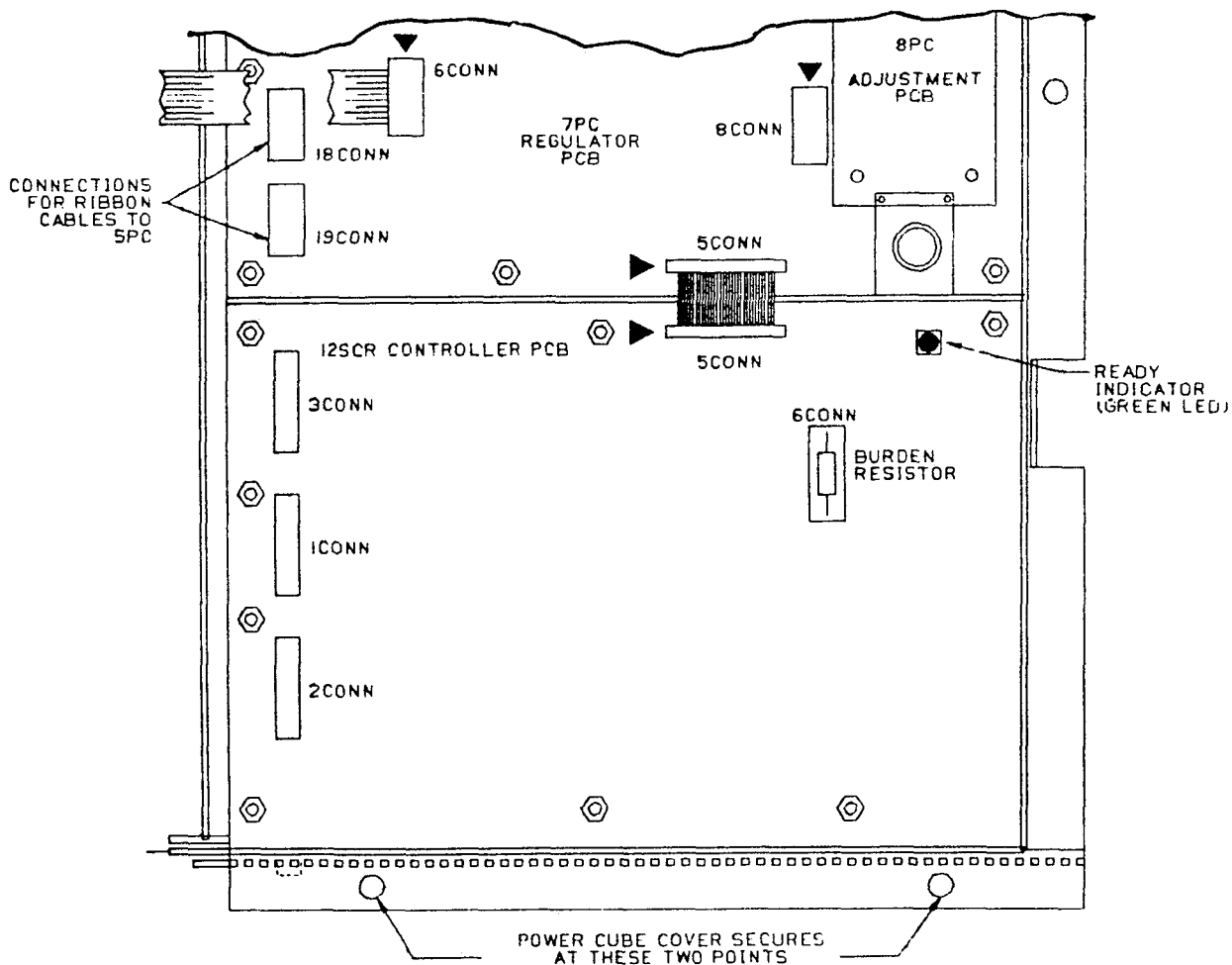
DWG. NO. 02Y00025-0217
SHEET 1 OF 2
EFF. 6/3/86

For Saber 3412 DC Drives
25HP 240 VAC
50HP 500 VAC

BURDEN RESISTOR SELECTION FOR OVERLOAD PROTECTION KIT 46S02735-0030

The standard Controller is shipped without a burden resistor in place on 6CONN of the 12SCR Controller PCB. See Figure 1 for location of 6CONN. The burden resistor calibrates the current feedback signal. For this reason, the motor characteristics (full load rated amps, HP, and voltage) must be matched

to the proper burden resistor value. Refer to Table 1 for selection of the burden resistor. The burden resistor kit contains a number of 6CONNS, each of which contains a different valued resistor. Select the 6CONN marked with the part number identified in Table 1 and insert into 6CONN.



Ref. TD.1 3S F101.2

Figure 1.

CHANGE RECORD			

DWG. NO. 02Y00025-0217
SHEET 1 OF 2
EFF. 6/3/86